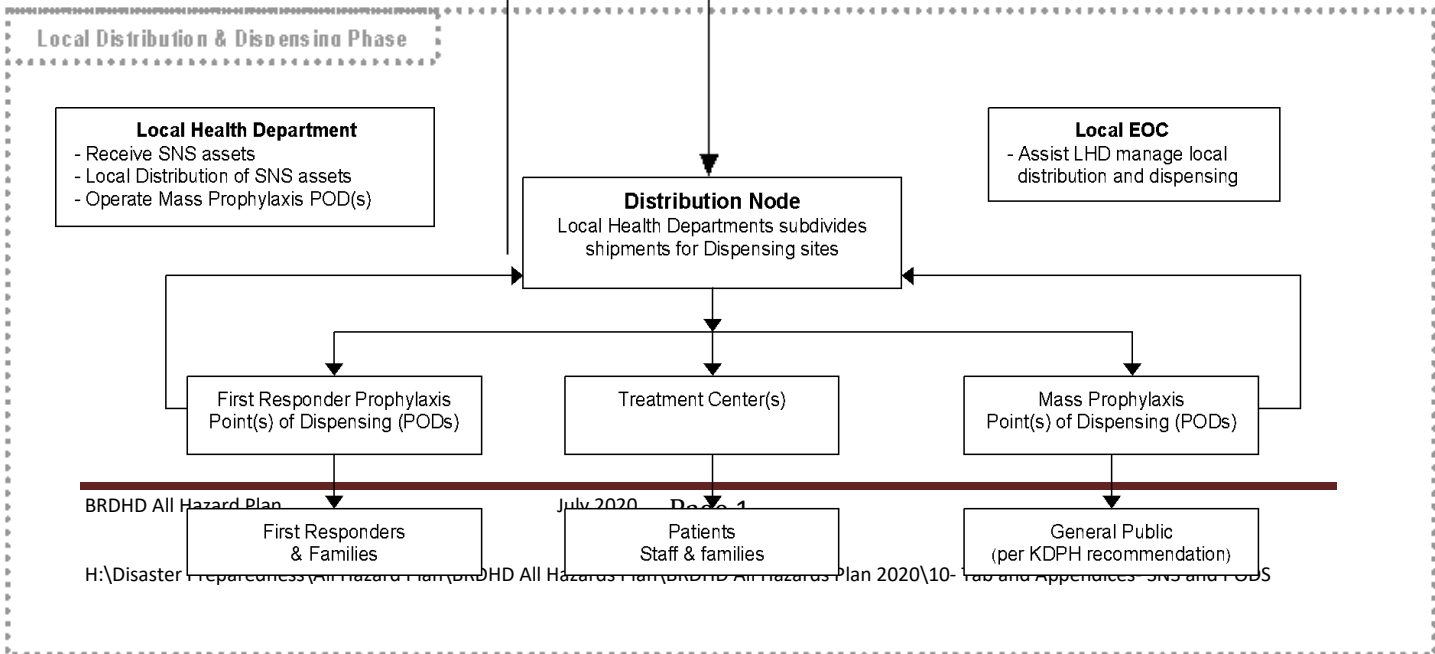
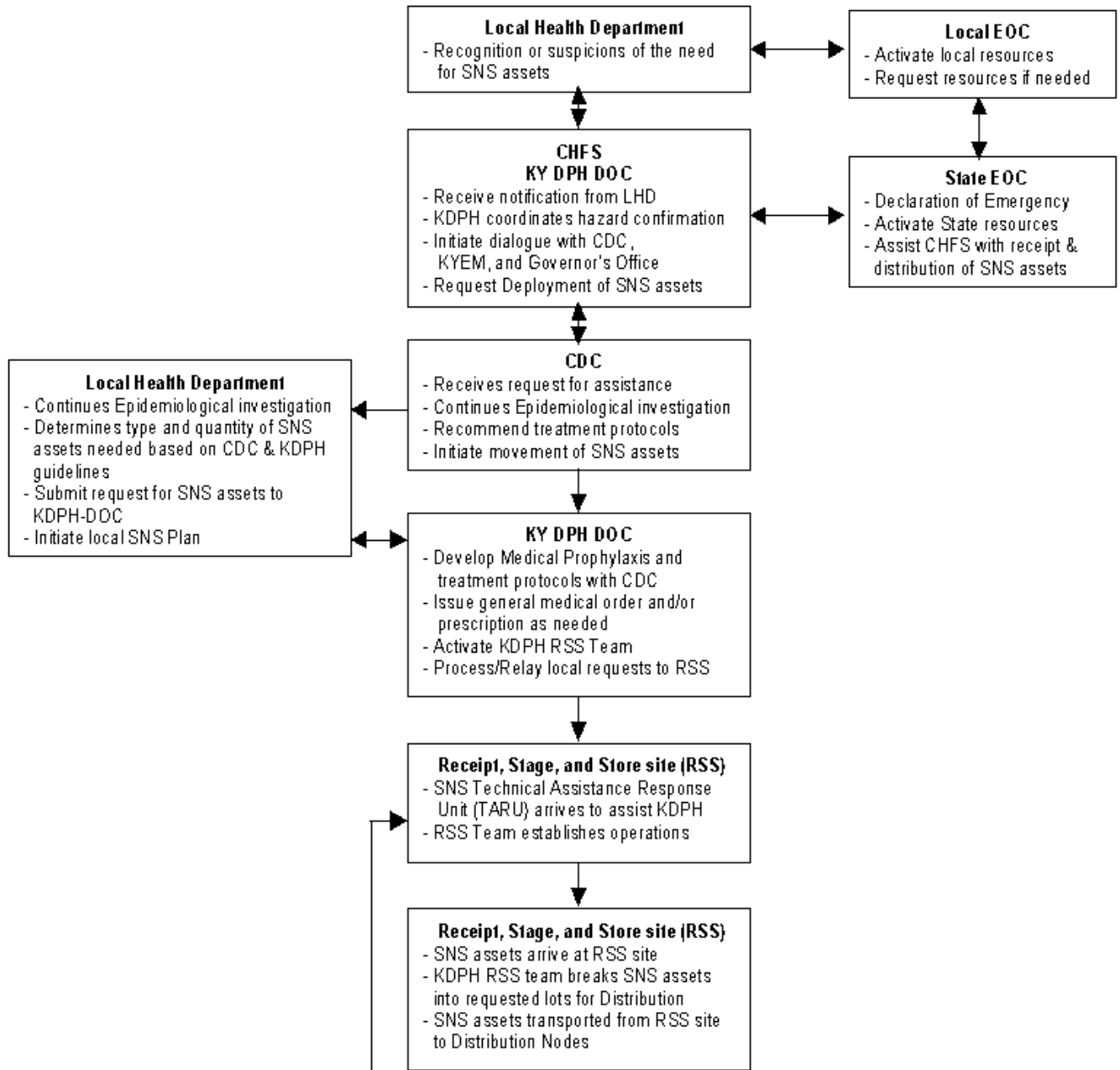


SNS Plan Flow Chart



CHEMPACK DEPLOYMENT FLOWCHART

Requesting Agency (EMS, Hospital, EM) identifies need for CHEMPACK. Calls **Respective Dispatch / 9-1-1 Center**.

Requesting County Dispatch: Collects the following information from the **Requesting Agency:**

- Location of incident
- Approximate number of casualties and symptoms
- Drop-off site for CHEMPACK (EMS triage, hospital)
- Specific route to drop-off site
- Point of Contact's radio channel, phone number or other communication link to coordinate delivery

Requesting County Dispatch calls Medical Center EMS Dispatch (270-745-1204)

After Chempack is requested **contact local law enforcement to provide security at drop off site** ie: (helipad, hospital etc.) **and provide law enforcement with ETA when received.**

Medical Center EMS Dispatch:

Collects the following information from the **Requesting Agency/County Dispatch:**

- Location of incident
- Approximate number of casualties and symptoms
- Drop-off site for CHEMPACK (EMS triage, hospital)
- Specific route to drop-off site
- Point of Contact's radio channel, phone number or other communication link to coordinate delivery
- Notifies **Medical Center Bowling Green Pharmacy** and **Medical Center Security**. Send ambulance to CHEMPACK storage site.
- Notifies and arranges transportation depending on location of CHEMPACK need and availability of transportation assets, the **most rapid method available**, in order of preference;

Ground Transport if estimated travel time by road **less than 30 minutes-**

- 1) Medical Center EMS ground ambulance with KSP escort; or
- 2) Medical Center Security with KSP escort; or
- 3) KSP vehicle.

Air Transport if estimated travel time by road **greater than 30 minutes-**

- AirEvac 62 (Bowling Green) air ambulance; or
- Air Methods KY 8 (Glasgow) air ambulance

Notifies the **Requesting Agency and Requesting County Dispatch** with the method of transportation and estimated time of arrival *After* CHEMPACK deployed, notify State **KY SNS POC** (502-229-8483), **KYEM Duty Officer** (800-255-2587) and Warren County **EM Director** (270-392-1351), and **Barren River Health Department** (270-784-3808 or 270-599-2288).

Medical Center Bowling Green Pharmacy:

- Initiates internal CHEMPACK protocols
- Prepares CHEMPACK for transport
- Authorizes opening of CHEMPACK
- Determines if all CHEMPACK should be released or a portion held back
- Completes Chain of Custody form

Transporting Agency:

- Sign Chain of Custody form from Medical Center Pharmacy
- Transport CHEMPACK contents to specified

Requesting Agency: Complete Chain of Custody from Transporting Agency

- Administer treatment
- Notifies local hospitals according to County Mass Casualty Plan

Anthrax Dispensing Algorithm

